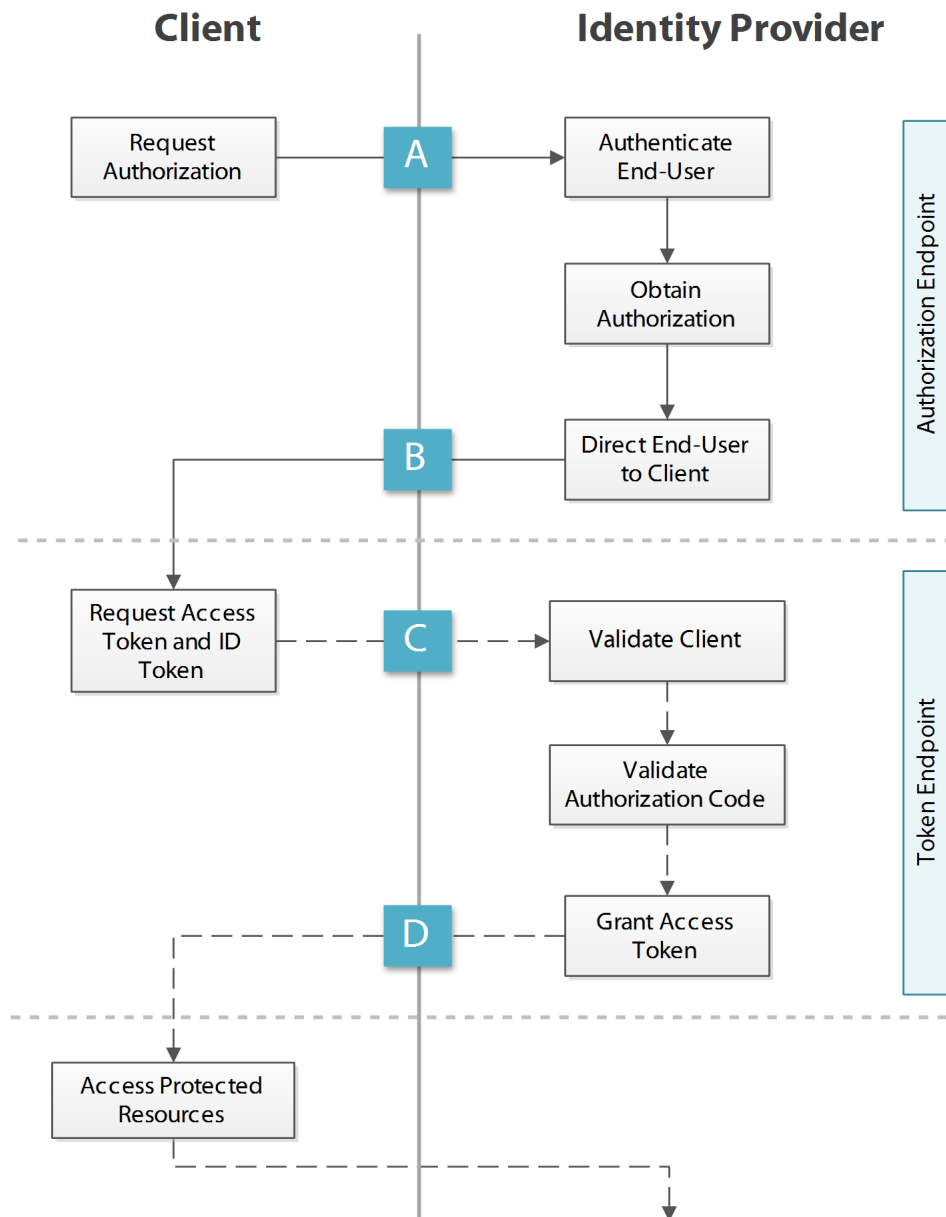


OpenID Connect

Authorization Code Flow



A

Client Requests Authorization

Request includes
 response_type: code
 scope: openid (MAY include additional scopes)
 client_id
 redirect_uri
 state (optional, recommended)
 nonce
 display (optional)
 prompt (optional)
 request (optional)
 request_uri (optional)

B

Service Provider Grants Authorization

JSON response object (200 OK) includes
 code
 state (required IFF state was sent in the request; must be equal to what was received)

C

Client Requests Access Token and ID Token

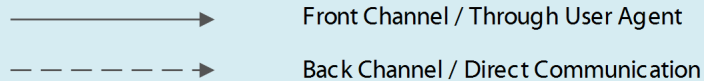
Request includes
 grant_type:
 authorization_code
 code
 redirect_uri

If the client is confidential, it must authenticate with the Authorization Server in this request.

D

Service Provider Grants Access Token and ID Token

JSON response object (200 OK) includes
 access_token
 id_token
 token_type: Bearer
 expires_in (optional)
 refresh_token (optional)
 scope (optional; SHOULD be included if the scope granted differs from the scope requested)

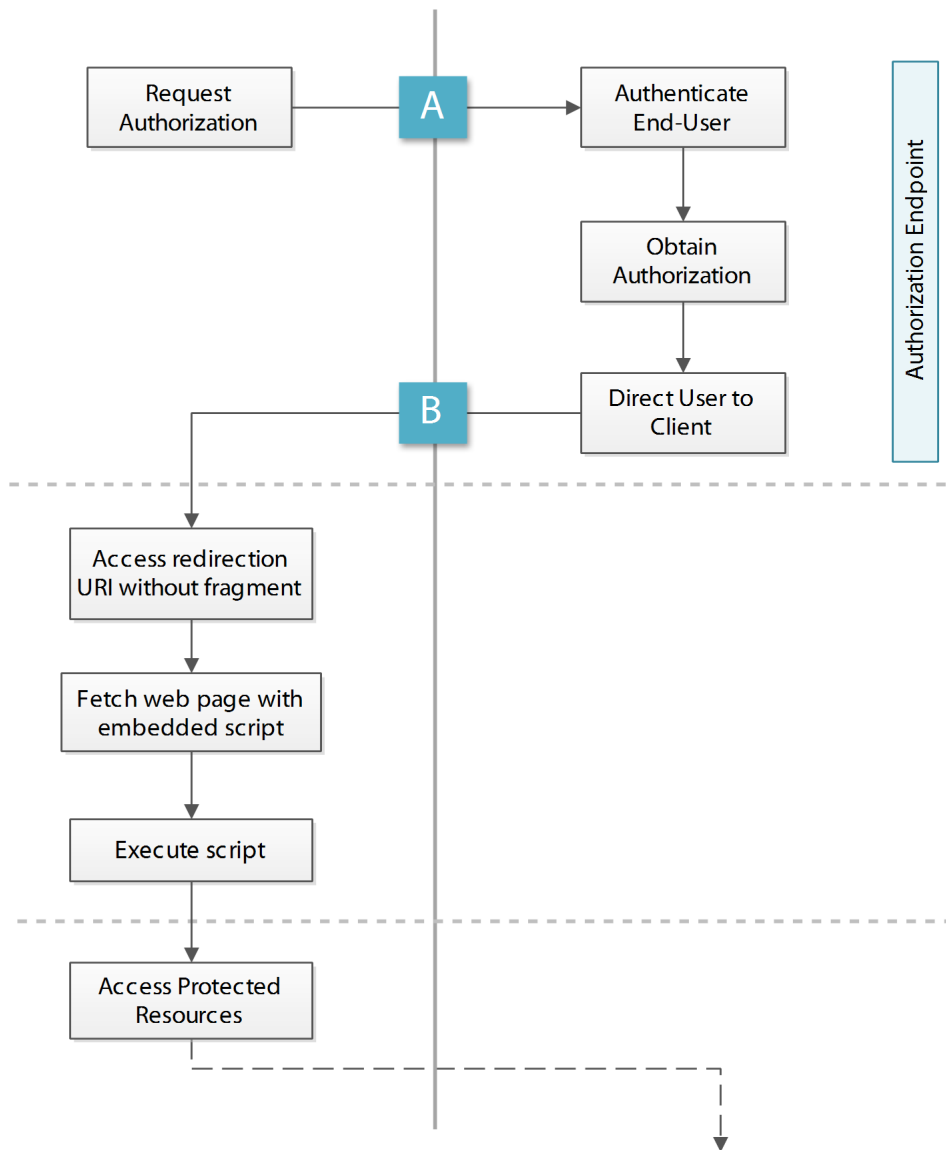


OpenID Connect

Implicit Flow

Client

Identity Provider



A

Client Requests Authorization

Request includes

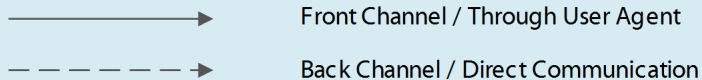
response_type: id_token token
 scope: openid (MAY include additional scopes)
 client_id
 redirect_uri (required IFF the client has pre-configured more than one value with the service provider)
 state (optional, recommended)
 nonce
 display (optional)
 prompt (optional)
 request (optional)
 request_uri (optional)

B

Service Provider Grants Authorization

Redirection URI (302 Found) includes (url-encoded in fragment)

access_token
 id_token
 token_type: Bearer
 expires_in (optional)
 refresh_token (optional)
 scope (optional; SHOULD be included if the scope granted differs from the scope requested)
 state (required IFF state was sent in the request; must be equal to what was received)

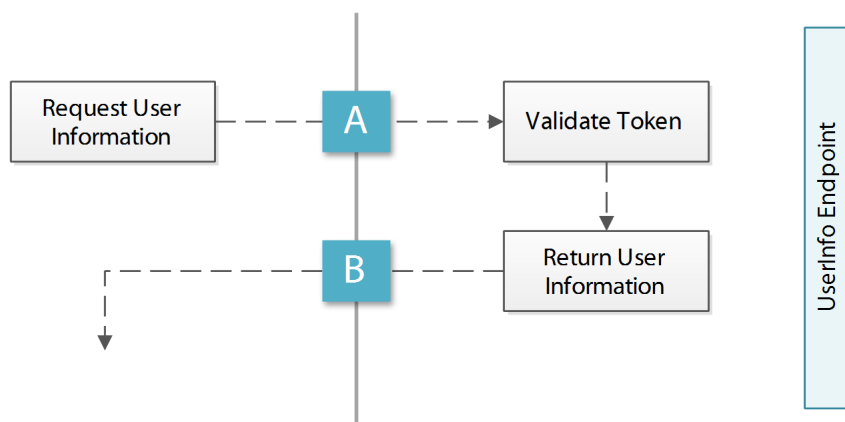


OpenID Connect

Optional Steps

Client

Identity Provider



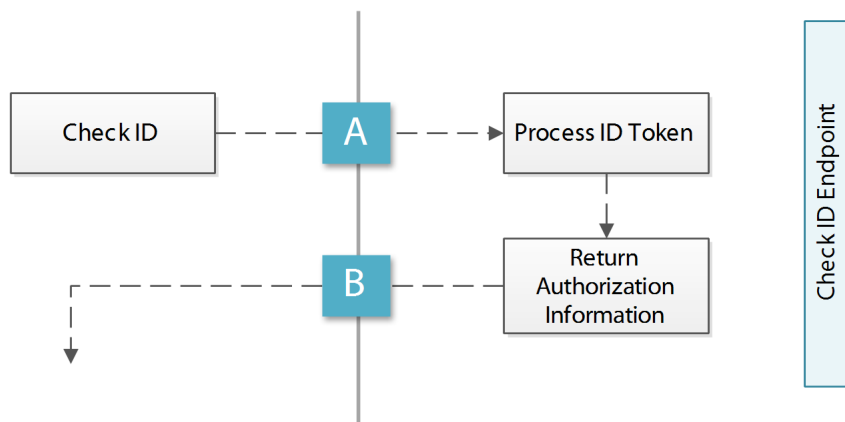
A Client Sends **User Info** Request

Request includes
access_token
schema: openid

B Service Provider Returns **User Info** Response

JSON response object (200 OK) includes
user_id

Optionally: name, given_name, family_name, middle_name, nickname, profile, picture, website, email, verified, gender, birthday, zoneinfo, locale, phone_number, address, updated_time



A Client Sends **Check ID** Request

Request includes
id_token

B Service Provider Returns **Check ID** Response

JSON response object (200 OK) includes
iss
user_id
aud
exp
iso29115 (optional)
nonce
auth_time (optional)

©2012-The MITRE Corporation. All rights reserved.

Approved for Public Release: 11-5232. Distribution Unlimited.

Created by: Amanda Anganes